
How do network weavers have the greatest impact?

January 10, 2018
Our Third Gathering



RECONSTRUCTIONIST LEARNING NETWORKS

Identifying, Emerging and Cultivating Network Values

<https://docs.google.com/document/d/18HA26wgkewyRdO5GI3EzIQ0E9XzqPLjEFFTcrHwod2A/edit>



RECONSTRUCTIONIST LEARNING NETWORKS

Network Leaders Network's Goals:

1. **As Network leaders we will learn from one another's practice and questions to increase our impact on network participants**
2. **To Document, Curate and Share our learning to improve our own learning and to share with others beyond this network**



Co-construct

Connecting people to people

Agendas and facilitation

Resources

Action Steps

Documentation curation



When we were together last:

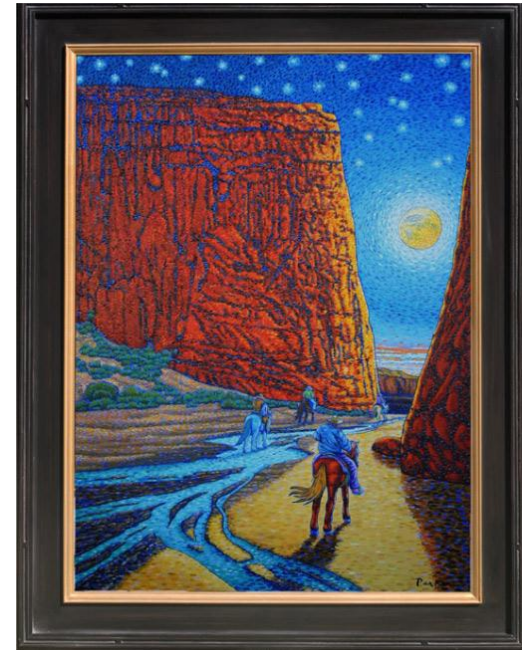
- We welcomed, Judith Schiller, Evie Rotstein and Nancy Parkes to the Network of Network Leaders
- Explore espoused values vs lived values in a network
- Guided imagery of how your participants or staff experience the values and norms of your network



Emerging: What defines us?

We share:

- *A commitment to the vibrancy of Jewish life
- *Roles that bring people together in common cause
- *A belief that greater impact comes from learning from other's wisdom and misses
- *A willingness to shape a culture of generosity



Emerging: We are also different

POLLS:

Different Developmental phases

Ideating, Launching, Forming, Established

Self organized and organized by an outside source

Different kinds of networks

Connectivity Network—links people to exchange information and learn from the exchange

An Alignment Network— linking people for help them create and share a set of ideas, goals and strategies. (common purpose)

Production Network—**fosters collective action by members to produce innovative practices, public policy, and other outputs for social impact.**



Emerging: What defines us?

Our Values?

Introduce yourself to our new colleague Rob Weinberg.

Please share a value that is defining this network.

Keep in mind values stated from the onset and/or others emerging through practice.



Today: Identifying, Emerging and Fostering Network Values

***Name the concrete tools that we use to establish and cultivate values in our networks**

***What gets in the way?**

***And what actions can we take?**

Amber, please share. How and why are they your pressing questions.



Tools to identify, emerge and cultivate Network Values

Spot and Label

Model

Say it and say it again

Lift up heroes who live the values in action



When intended values are not being experienced

- **Members have to adjust the ways in which they behave. If the network hasn't been explicit about which net-centric behaviors are suitable, then it should do so.**
- **If the network hasn't been clear about a code of behavior but hasn't been enforcing it, then it should start**
- **Network members must start to consistently model --that is promote support and insist on—the behaviors and attitudes that build a network's gift economy**
- **Network builders must have the nerve to call the network's attention To fundamental weakness in its design. And they have to guide the network through the process of resetting its design**

Connecting to Change the World



RECONSTRUCTIONIST LEARNING NETWORKS

Take-aways and Next Steps



February 21, 1:00-2:15 pm est

April 18, 1:00-2:15 pm est

May 23, 1:00-2:15 pm est



RECONSTRUCTIONIST LEARNING NETWORKS