



RECONSTRUCTING JUDAISM

Affiliation Dues 2023-24

PLEASE RETURN THIS PLEDGE FORM BY SEPTEMBER 8, 2023

You may also fill out this form electronically by [clicking this link to our online form](#).

Name of congregation _____ Date _____

Street address _____ City _____ State _____ Zip _____

Current number of member households _____

1 This dues form reflects a decision by... (choose all that apply)

- Rabbi President Treasurer Head Administrator/Executive Director
 Executive Committee Board Congregational Meeting

2 We choose the following dues category:

- Enter Dues factor = .01 (1% of your budget), with a minimum dues payment of \$360.
 Engage Dues factor = .015 (1.5% of your budget)
 Invest Dues factor = .02 (2% or more of your budget)

Calculating Dues:

1. Determine your congregation's budgeted annual expenses for the fiscal year that includes September 2023 and enter this number in "budgeted expenses." You may exclude from your annual expenses capital expenditures such as the cost of a new building or renovation, but please include expenses for routine repairs and maintenance. Please attach either a copy of your budget or a budget summary with this form.
2. Locate the percentage associated with your membership level and enter it on the line for "dues factor."
3. Multiply your budgeted expenses by the dues factor to calculate your dues.

Budgeted expenses

X

Dues factor

=

Annual dues

Continue on next page →



3 DUES MUST BE PAID IN FULL BY AUGUST 31, 2024

We would like to plan our payments according to the following schedule:

- One annual payment Date: _____
- Two annual payments Date: _____ Date: _____
- Four quarterly payments Date: _____ Date: _____ Date: _____ Date: _____
- Monthly payments

Payments will be made by: Check (made out to Reconstructing Judaism) Credit card

Type of card: VISA Mastercard American Express

Credit card # _____ Expiration date _____

Name on card _____ Security code _____

We're paying this amount today: \$ _____

Please check here if you want us to send you invoice(s).

If we have questions about your payment, who should we contact?

Name: _____ Email: _____ Phone: _____

HAVE YOU INCLUDED OR EMAILED TO JWEINBERG@RECONSTRUCTINGJUDAISM.ORG:

- Budget or budget summary for the fiscal year that includes Sept. 2023
- Membership information, including email addresses
- Staff/officer list with updates and/or corrections

Please email all completed documents to JWeinberg@ReconstructingJudaism.org, or mail to:

Thriving Communities
Reconstructing Judaism
1299 Church Road
Wyncote, PA 19095

If you have questions and need immediate assistance, please contact Jacob Weinberg at 215.576.0800, ext. 131 or at JWeinberg@ReconstructingJudaism.org.

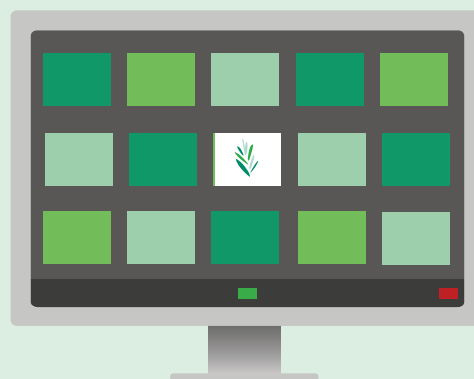


Reckoning Together Pilgrimage

As part of our ongoing racial justice work, Reconstructing Judaism embarked upon two pilgrimages this year to address and reckon with historic and ongoing racial injustices in the United States. In March, 200 Reconstructionists from over 40 of our communities convened in Montgomery, Selma, Birmingham and Atlanta. This trip was preceded by a pilgrimage exclusively for Reconstructionist leaders of African descent. A cohort of these leaders returned on the movement-wide pilgrimage to lead the BIPOC cohort on the trip.

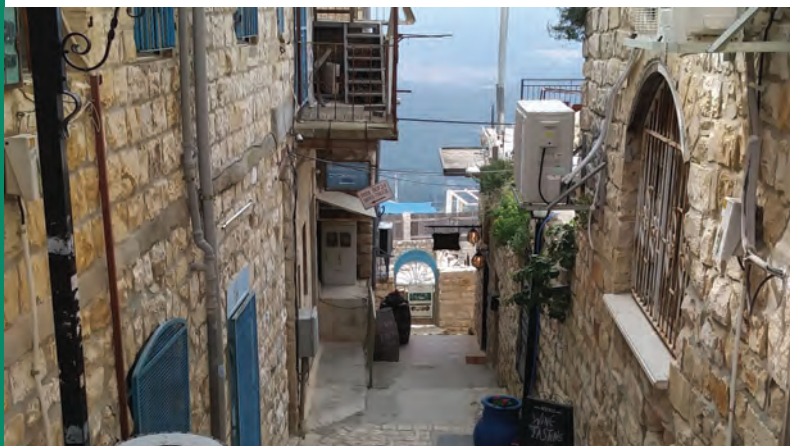
Leadership Calls

Thriving Communities holds online Leadership Calls, where leaders of affiliated congregations and *havurot* gather to discuss emergent topics affecting our communities and the ways that communities are envisioning the future of Jewish Reconstructionist communal life. This year's topics have included the movement-wide Reparations Resolution, healthy conversations in congregations, leadership development, budgeting, rabbi-congregation relationships and staff evaluation.



Israel Resources

Reconstructing Judaism curates and send out suggested Israel-related webinars and programs, while also offering in-house programs such as "A History of the Israeli-Palestinian Conflict from a Progressive Zionist Perspective," taught by Rabbi Maurice Harris, our Israel Affairs Specialist. The movement's Joint Israel Commission also develops resources for Reconstructionist communities, which can be accessed from our Israel resource page at: ReconstructingJudaism.org/israel.



Reparations Resolution

In December, the Plenum voted to approve the Reconstructing Judaism Resolution on Reparations. The Resolution was drafted by the Tikkun Olam Commission with guidance from the Jews of Color and Allies Advisory group, and input from Reconstructionist communities. The Resolution provides an opportunity for Reconstructionist communities to facilitate meaningful discussion around the work of teshuvah in light of racial injustice and inequities. For more information, go to: ReconstructingJudaism.org/reparations.



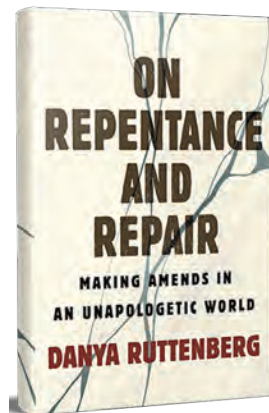


New Affiliates

We are thrilled that two congregations joined the Reconstructionist Movement this past year. Nafshenu is an independent, energetic, congregation in the Cherry Hill, New Jersey area. They are currently served by Rabbi David Goodman (RRC '22). Hebrew Congregation of Somers is a warm and caring synagogue with a long history of Reconstructionist practice. They are currently served by Rabbi Shoshana Leis (RRC '05).

The New Field Education Program

The new William H. Fern Program in Field Education will launch in the Fall of 2023. In this program advanced students at the Reconstructionist Rabbinical College will engage in intensive field placements in diverse geographical locations and organizational settings. The geographic flexibility of this program further opens the door for greater partnership with affiliated Reconstructionist communities across the country.



Book Club on Teshuvah

This past Fall, Reconstructing Judaism held a movement-wide book club that met to discuss Rabbi Danya Ruttenberg's new book, *On Repentance and Repair: Making Amends in an Unapologetic World*. Over four sessions, RRC faculty, Reconstructing Judaism staff, and congregational lay-leaders examined ways in which the process of teshuvah that Ruttenberg outlined can inform ways we confront and address. To take a look at the book, please visit: <https://www.onrepentance.com/>

Evolve

Evolve publishes conversation-sparking essays, podcasts, and study guides from thought-provoking rabbis, leaders and creators. Its online platform seeks to promote the ongoing evolution of the Jewish community by launching collective, communal conversations about the urgent issues of our day. To that end, Evolve brings multiple voices together to listen to one another's point of view and to interact respectfully. Read and listen at: [Evolve.ReconstructingJudaism.org](https://www.Evolve.ReconstructingJudaism.org).



Thriving Communities Contact Information



Tresa Grauer, Ph.D.

she/her

Vice President for Thriving Communities

215.576.0800, ext. 144

TGrauer@ReconstructingJudaism.org



Rabbi Sandra Lawson

she/her

Director of Racial Diversity, Equity and Inclusion

215.576.0800, ext. 152

SLawson@ReconstructingJudaism.org



Rabbi Maurice Harris

he/him

Associate Director for Thriving Communities and Israel Affairs Specialist

215.576.0800, ext. 118

MHarris@ReconstructingJudaism.org



Rabbi Elliot Skiddell

he/him

Interim Director of Rabbinic Placement and Employment

215.576.0800, ext. 304

ESkiddell@ReconstructingJudaism.org



Nina Korican

she/her

Assistant Director for Thriving Communities

215.576.0800, ext. 112

NKorican@ReconstructingJudaism.org



Jacob Weinberg

he/him

Associate for Thriving Communities

215.576.0800, ext. 131

JWeinberg@ReconstructingJudaism.org



Jackie Land

she/her

Senior Consultant for Education

215.576.0800, ext. 101

JLand@ReconstructingJudaism.org



Rabbi Micah Geurin Weiss

he/him

Associate Director for Thriving Communities and *Tikkun Olam* Specialist

215.576.0800, ext. 155

MWeiss@ReconstructingJudaism.org